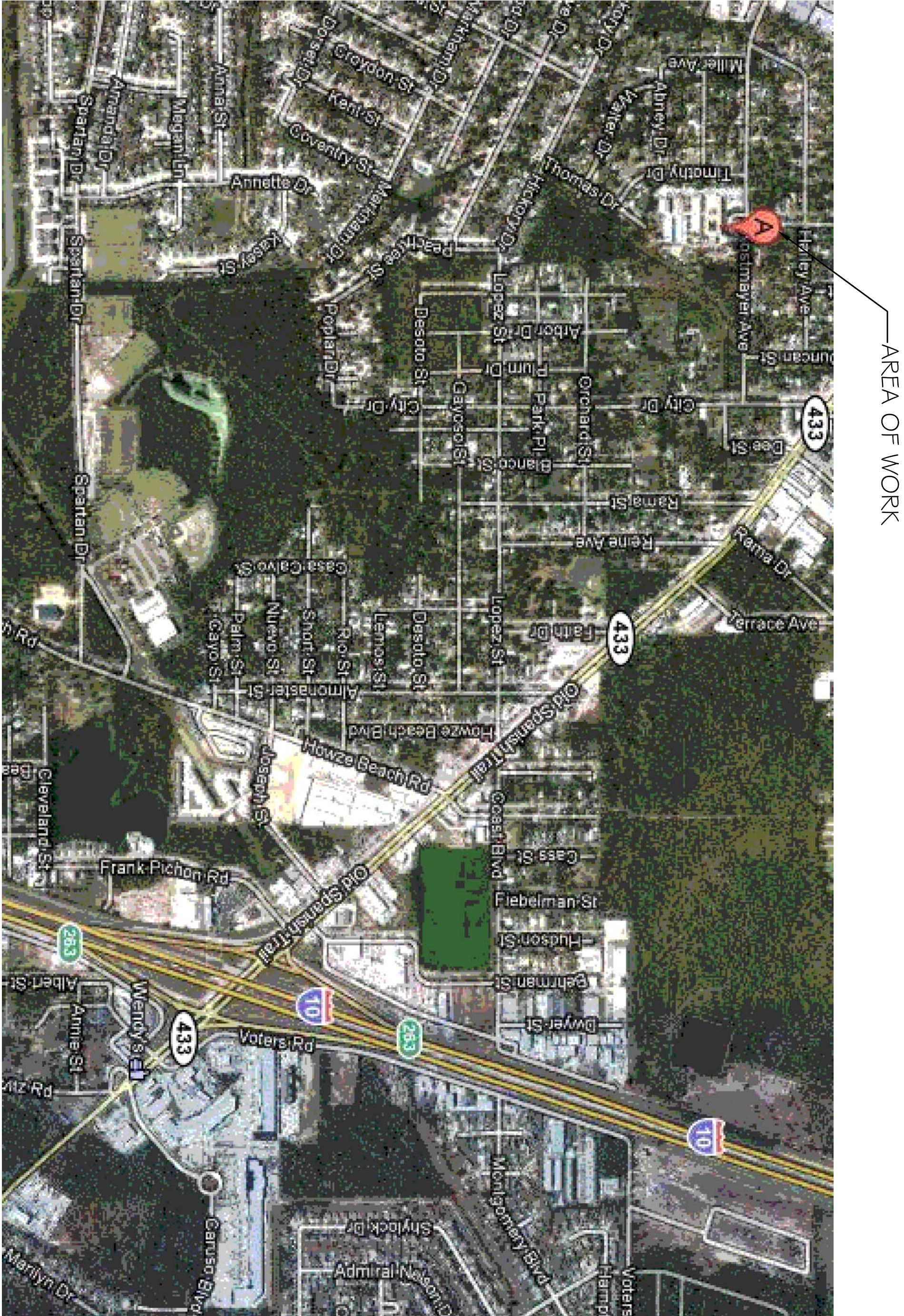


REROOFING OF  
ABNEY ELEMENTARY SCHOOL  
BLDG. A (#1966)  
825 KOSTMAYER AVE.  
SLIDELL, LOUISIANA  
70458

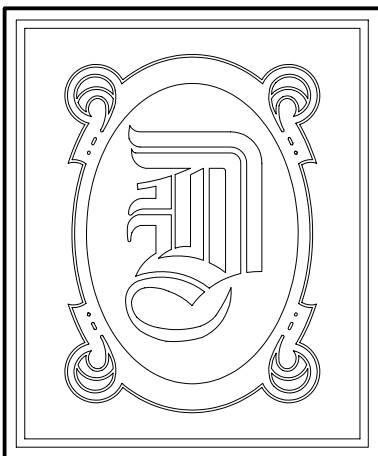
INTERNATIONAL BUILDING CODE 2009

OCCUPANCY CLASSIFICATION:  
EDUCATIONAL, GROUP E, (SEC 305)



VICINITY MAP  
N.T.S.

DRAWING INDEX	
-	COVER SHEET
C-1	SITE PLAN
A-1	BLDG. A (No. 1966) ROOF PLAN
A-2	BLDG. A DETAILS
A-3	BLDG. A PHOTOS



DAMMON ENGINEERING, INC.  
1095 FLORIDA AVE. OFFICE: (985) 649-5832  
SLIDELL, LA 70458 FAX: (985) 641-5950  
WEBSITE: WWW.DAMMONENGINEERING.COM  
EMAIL: DAMMONENG@BELLSOUTH.NET

DATE: 6-28-12  
JOB NO. 2145

REROOFING OF  
ABNEY ELEMENTARY SCHOOL  
825 KOSTMAYER AVE.  
SLIDELL, LA 70458